

2.0 — Last update: 2018/07/05

CSoft AS

Table of Contents

- 1. 1. CSoft Software License Agreement..... 1
- 2. 2. Introduction 3
- 3. 3. Installation Guide 4
- 4. 4. Integration Guide..... 5
- 5. 5. CSPanorama API Specification..... 12
 - 5.1. 5.1 PanoramaAPI.setMyConfig..... 13
 - 5.2. 5.2 PanoramaAPI.getMyConfig 14
 - 5.3. 5.3 PanoramaAPI.setFileName 15
 - 5.4. 5.4 PanoramaAPI.getFileName 16
 - 5.5. 5.5 PanoramaAPI.setCurrentPageNumber 17
 - 5.6. 5.6 PanoramaAPI.getCurrentPageNumber 18
 - 5.7. 5.7 PanoramaAPI.getTotalPageNumber 19

1. 1. CSoft Software License Agreement

CSoft AS – All rights reserved.

No part of this documentation may be altered, adapted, or translated into other languages without prior written permission from the CSoft. It is prohibited to create any documents based on this original. EDA and its logotype as well as CSoft and its logotype are the trademarks of CSoft*. Microsoft Windows is the registered trademark of the Microsoft Corporation. MS-DOS is the registered trademark of the Microsoft Corporation. Pentium and Pentium Pro are the registered trademarks of the Intel Company.

Other program and equipment names are the registered trademarks of the corresponding companies. CSoft and the Licensee agreed as the follows:

Object: CSoft Software products including programs and documentation (hereafter referred to as the license). The license described in the CSoft product User Guide, shall be distributed in accordance with the terms of the License Agreement and cannot be used, transferred or sold under any conditions, other than what is clearly specified in the following Agreement.

License Agreement

CSOFT transfers the Licensee a non-exclusive License to use the license supplied under this Agreement according to the conditions specified bellow. Should the Licensee not agree to the terms of the Agreement the installation must be terminated before the activation of said license and return for a full refund within 30 days of the purchase. CSOFT will on receipt of all deliverables and after confirmation to non-activation of the license make a 100% refund of the amount paid for the license.

License

1. Under this License the Licensee may use the programs on one consecutive computer only. To use the programs on several consecutive working computers the Licensee shall obtain the corresponding number of paid Licenses.
2. The Licensee is entitled to make one archive copy of the license, which automatically becomes CSOFT property and falls under this Agreement.
3. The documentation may not be copied and/or distributed in any way or form.
4. The Licensee shall prevent the license from being used, copied or distributed without authorization.
5. This License is valid from the date the Licensee obtains it and until its termination. Should the Licensee break the terms of this License agreement it will automatically void the terms of the agreement.

6. All rights of name, contents and appearance of the package shall be the exclusive property of CSOFT.
7. The present version and all the following license versions shall fall under the terms of this License Agreement or any future License Agreement that supersedes this agreement.

Warranty

1. CSOFT warrants that the Software is free from defects at delivery and for a period of ninety (90) days of normal use from the date of the original purchase. Should any defects be detected CSOFT shall replace the defected materials. Minor non-fatal bugs and compatibility issues relating to normal product uses does not constitute defects.
2. CSOFT has no warranty responsibility for the license or the results of the usage of this license in terms of accuracy, correctness, reliability or similar.
3. CSOFT is not responsible for any damage, directly or indirectly linked with the use of or misuse of this license.
4. No other information, except for the present License, obtained by the licensee shall cause any CSOFT warranty responsibility.

Modifications in the programs and new versions

1. The Licensee will have to fill out and return to CSOFT the User's Registration Card in order for the Licensee to have the right of getting any possible supplements, new license copies on preferential terms and notice of errors corrections.

2. 2. Introduction

3. 3. Installation Guide

4. 4. Integration Guide

Steps to integrate CSPanorama Viewer in your application

Step 1. Fill all credentials to Get License Key

Run Pan_API_Configuration.exe from your system. Fill all the credential and generate a configuration file(.cnf file) for your system. Save the Configuration and/or send us the file by email to generate your license.

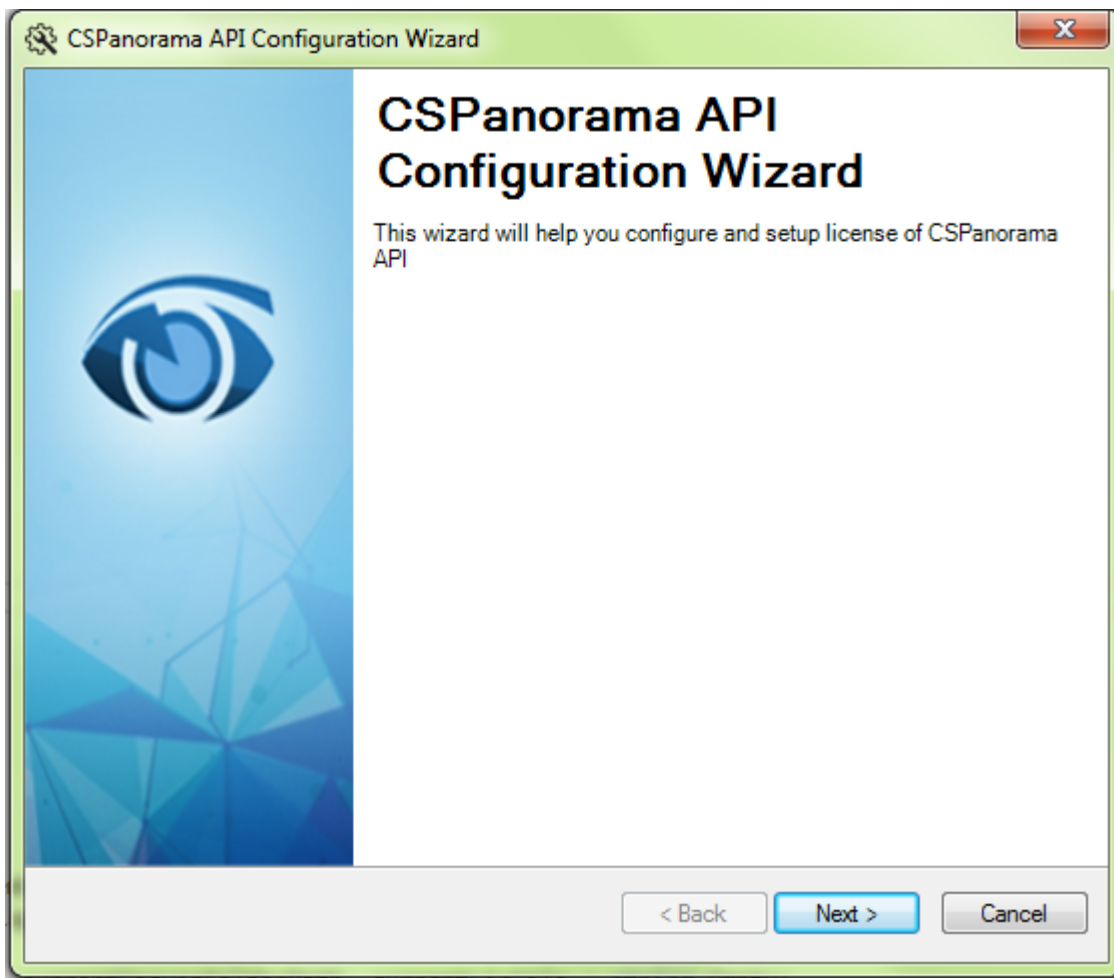


Image 1: Run the configuration wizard

Get Your License

Fill up the form and send the output (.cnf file) to generate your license. All fields are mandatory.

Configuration Options

- Get your license
- Setup your license
- Configure API Settings

Customer Information

Deployment License:

First Name: Adam

Last Name: Smith

Company: Adam Smith Inc.

Address: 106 East West Avenue, Tutbury

City: Derbyshire

Post Code: DE75

Country: United Kingdom

Email: Adam.Smith@asipl.com

Phone: 42356782

Machine Code: GWXAUVNOPVxB7UyfkEk0A==

Save Configuration Send Email

< Back Next > Cancel

Image 2: Generate the .cnf file by providing your information

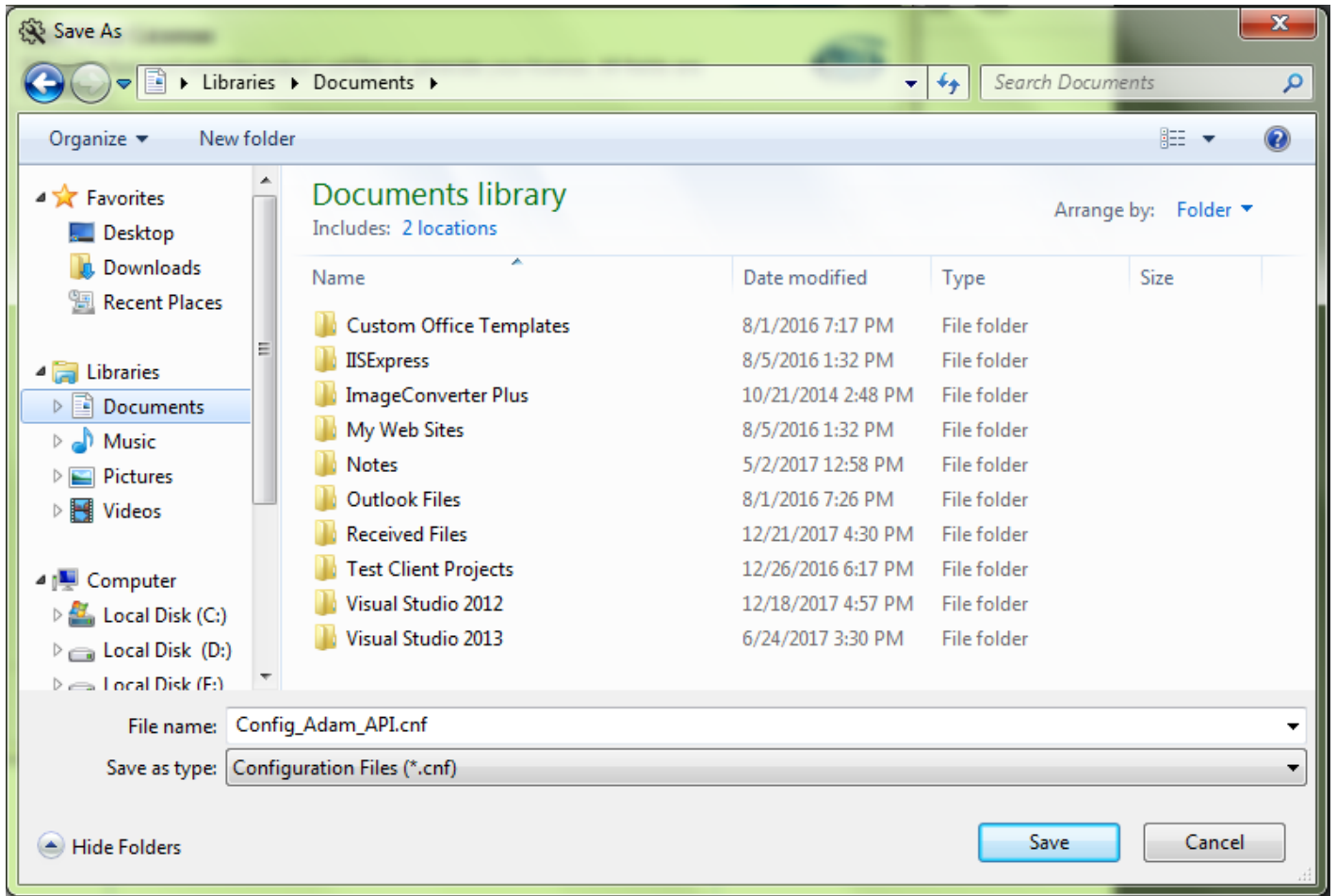


Image 3: Save the .cnf file in your system

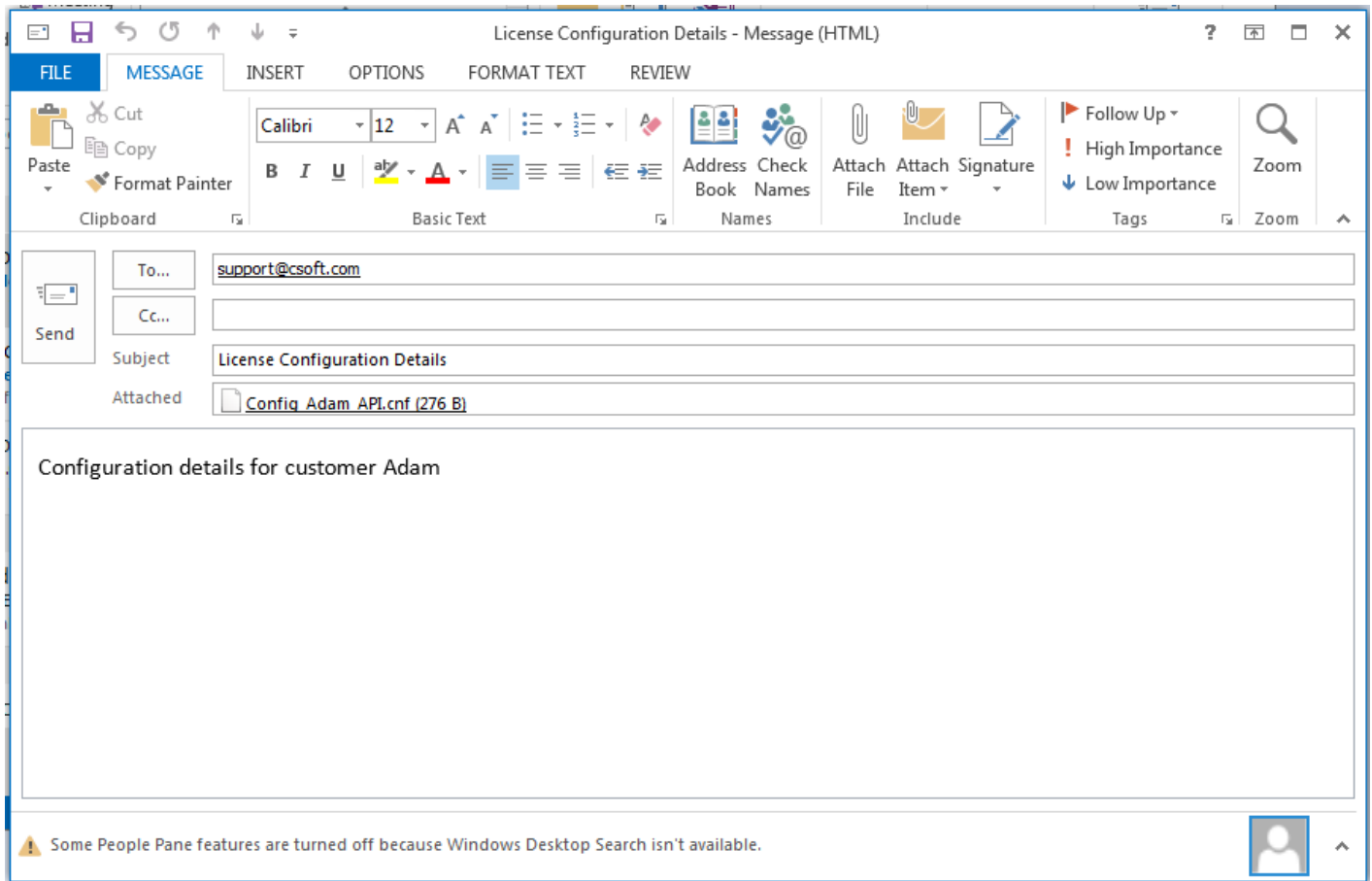


Image 4: send the .cnf file to support@csoft.com to get the license

Step 2: Setup CSPanorama API License

In Setup your License section, browse the valid license file received from us and upload the license into CSPanorama API web service. The wizard will show the most important features of the license.

Step 3: Configure CSPanorama API Setting

You can also use the Configuration API Setting section of the wizard to setup other required variables of the CSPanorama API. Refer to the image below for details.

Alternatively, you can use the following manual steps to configure the API.

Manually Configure CSPanorama Service

Install CSPanorama Viewer service (.SVC Service) in your IIS (Default Port).

1. In the web.config file of the hosted service set the default path from which the files will be viewed.

```
<add key="serverFolderPath" value="C:/Folder Name/" />
```

2. In the web.config file of the hosted service, edit the 'LicFilePath' key and set the value to the path of your trial license file.

```
<add key="LicFilePath" value="C:/Folder Name/Your_API_License.lic" />
```

3. In the web.config file of the hosted service, set the path of the log file by editing the value of 'errorLogpath' key.

```
<add key="errorLogpath" value="C:/Folder Name/log/Err_Log.txt" />
```

4. In the web.config file of the hosted service, set the path where the annotation files will be saved by editing the value of 'annotationFolderPath' key.

```
<add key="annotationFolderPath" value="C:/annotation_Files/" />
```

Step 4: Configure Your Sample Application

Open the sample “**SampleAPIApplication.sln**” in Microsoft Visual Studio* from the Example folder where you have installed CSPanorama API.

Before running the application, make sure to comment out the below section and put your development license in the **AddLicense** method.

```
PanoramaAPI.AddLicense("Your_Development_License_Key")
```

Step 5: Add CSPanorama Viewer in the Application

Create a div in your web application and set its ID to “**Panorama-Viewer**” to display the CSPanorama viewer in your application. You can design the viewer as per your wish but you can't override any property of the div “**Panorama-Viewer**”.

```
<div id="sampleDiv">  
...  
<div id="Panorama-Viewer"></div>
```


```
...  
</div>
```

Step 6: Authentication of CSPanorama API License in the Application

Put your CSPanorama API development license key along with your application. In your application add the two dll as mentioned below and call the method.

1. Consac.License
2. LogicNP.CryptoLicensing

```
CSPanoramaAPI.AddLicense("your_development_license_Key");
```

 **NOTE:** If your development machine is also the deployment machine then call:
`CSPanoramaAPI.AddLicense("Deployment_License_Key",
"Development_License_Key");`

Step 7: Configure CSPanorama Viewer

In the example application provided, inspect the method FileMetaData(). Put all the essential CSPanoramaAPI methods step by step as shown below to get the file viewed in your div. Call this method in any event to connect with the service to receive the required response.

```
function FileMetaData() {  
  
    PanoramaAPI.setMyConfig({  
        //Put the Panorama Service URL which is hosted in IIS  
        PanoramaService: "http://localhost/Service/PanoramaConversionEngine.svc",  
        thumbnailSet: "5", //set the number of thumbnails in a set  
        thumbPageWidth: "180", //set the size of thumbnail width in pixel  
        thumbPageHeight: "180", //set the size of thumbnail width in pixel  
        showFileDivId: "#Panorama-Viewer",  
        annotation: true //set to false if you do not need annotation  
    });  
  
    //Supply the filename from your application logic  
    PanoramaAPI.fileName = (your filename.extension);  
    PanoramaAPI.currentPageNumber = 1;  
    PanoramaAPI.getShowFileJSON();  
    PanoramaAPI.setRuler();  
}
```

```
//show Thumbnails of document. Omit if you don't want to show //thumbnails
var JsonThumbnail = PanoramaAPI.getThumbnailJSON();
bindThumbnail(JsonThumbnail);

//Get File properties in JSON format. Omit if you don't want to show file
properties
var JsonFileProperties = PanoramaAPI.getFileInfo();
bindFileInfo(JsonFileProperties);

//Get pdf bookmarks in JSON format. Omit if you don't want to show bookmarks
var JsonBookmark = PanoramaAPI.getBookmarkJSON();
bindBookmark(JsonBookmark);
}
```

5. 5. CSPanorama API Specification

The main JavaScript object is called PanoramaAPI and all following methods are referenced using PanoramaAPI.

5.1. 5.1 PanoramaAPI.setMyConfig

Use this method to set parameters as a default value in PanoramaAPI.setMyConfig to configure PanoramaAPI Viewer.

Syntax	PanoramaAPI.setMyConfig(<i>JavaScriptObject</i>)	
Parameters	JavaScriptObject	JavaScriptObject is defined as given below: PanoramaService: "http://PanoramaConversionEngine.svc", thumbnailSet: "5", thumbPageWidth: "180", thumbPageHeight: "180", showFileDivId: "#Panorama-Viewer", annotation: true
Returns	NA	

5.2. 5.2 PanoramaAPI.getMyConfig

Returns JSON String which is configured as a default value in PanoramaAPI.setMyConfig method.

Syntax	PanoramaAPI.getMyConfig()	
Parameters	NA	
Returns	JSON String	JSON String which is configured in PanoramaAPI.setMyConfig method with given parameters such as: <code>PanoramaService: "http://PanoramaConversionEngine.svc", thumbnailSet: "5", thumbPageWidth: "180", thumbPageHeight: "180", showFileDivId: "#Panorama-Viewer", annotation: true</code>

5.3. 5.3 PanoramaAPI.setFileName

Use this method to set file name.

Syntax	PanoramaAPI.setFileName(fileName.extension)	
Parameters	fileName	Name of the file with extension
Returns	NA	

5.4. 5.4 PanoramaAPI.GetFileName

Returns the file name of the document.

Syntax	PanoramaAPI.GetFileName()	
Parameters	NA	
Returns	fileName	Name of the file with extension

5.5. 5.5 PanoramaAPI.setCurrentPageNumber

Use this method to set current page number of the document.

Syntax	PanoramaAPI.setCurrentPageNumber (currPgNo)	
Parameters	currPgNo	Page number of current active page
Returns	NA	

5.6. 5.6 PanoramaAPI.getCurrentPageNumber

Returns the page number of currently active page in a multipage document.

Syntax	PanoramaAPI.getCurrentPageNumber()	
Parameters	None	
Returns	currentPageNo	Number of currently active page

5.7. 5.7 PanoramaAPI.getTotalPageNumber

Returns the total page number of current document.

Syntax	PanoramaAPI.getTotalPageNumber ()	
Parameters	None	
Returns	totalPageNo	Total page number of the document